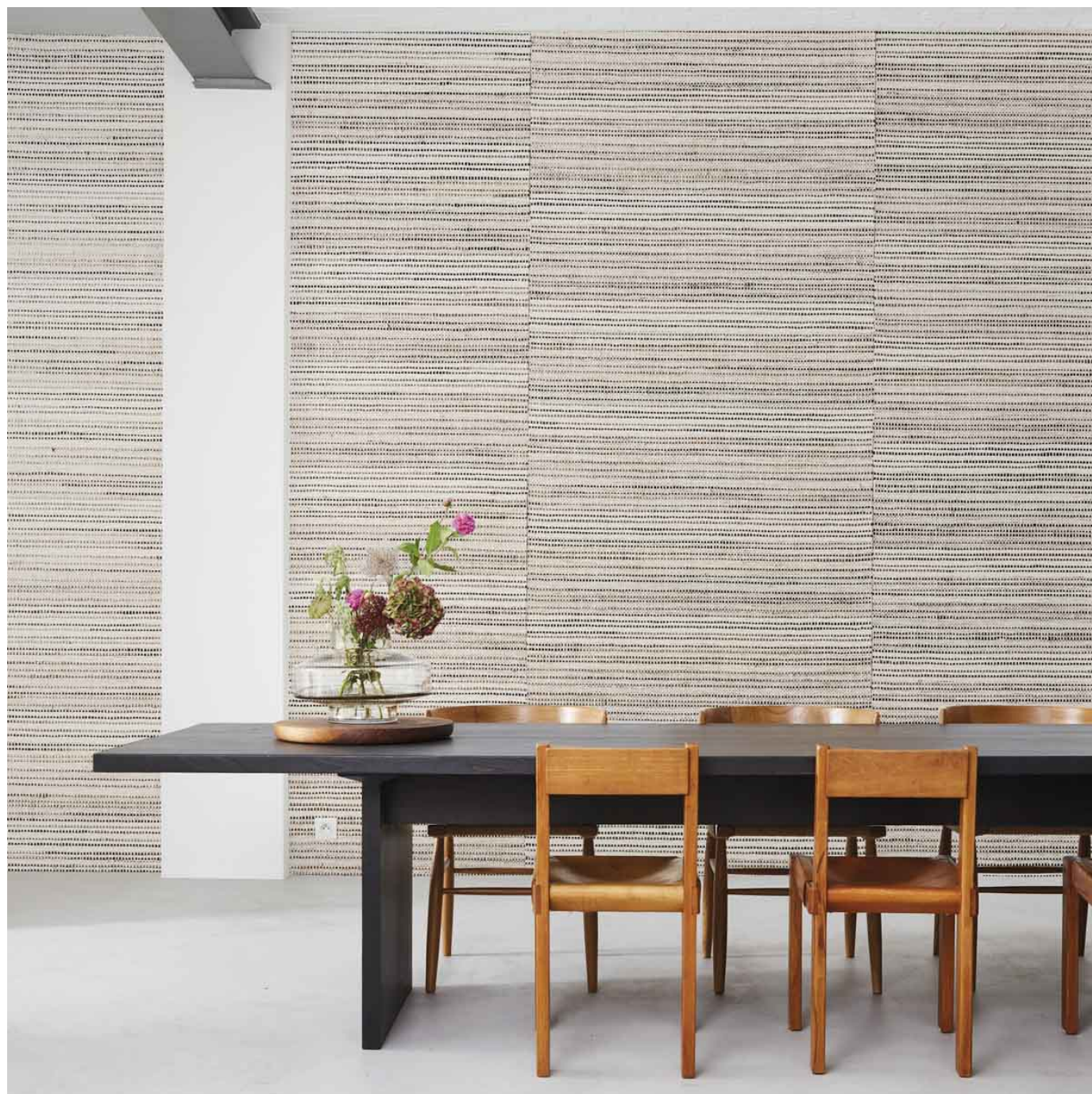


INT31 PERCEPTION

Wallcoverings » Decorative Wallcoverings



Brand: **Omexco**

Collections: **Intuition**

Applications: **Walls**

1300 306 399

info@baresque.com.au

baresque.com.au

1 of 5

INT31 PERCEPTION

Wallcoverings » Decorative Wallcoverings



INT31 PERCEPTION

Wallcoverings » Decorative Wallcoverings

This design consists of thick abaca leaves that are dried, twisted and woven with paper weave. This combination creates a vertical colour effect that looks like a subtle stripe. Available in 3 different colourways with different colour tones in the weft and warp. The weaving itself is very irregular. There's a lot of colour variation in this design, because the abaca yarns are absorbing the dye differently.

- ✓ Ecological
- ✓ Light Resistant

Description	<p>Omexco's latest collection uses a diverse range of natural materials. In this collection, we aim to emphasize the inherent richness of natural fibres in their purest form.</p> <p>The interplay of weaves, the rhythm of the stripes, and the meticulously crafted geometric patterns have been carefully curated by our design studio. Their aim is to illuminate the myriad treasures these materials have to offer.</p> <p>The natural materials of intuition provide a tactile delight, awakening the senses and introducing a fresh dimension to your living spaces. intuition embodies the selection of an aesthetic and sensorially captivating design.</p>
Composition	Bakbak, Bacnoc & Paper Yarn
Environmental Info	The materials contained in these wallcoverings are naturally occurring and renewable resources harvested from farms and coloured with water-based inks.
Pattern Repeat Size	Not Applicable
Roll Size	110cm wide - Available by the lineal metre
Weight	± 715 g/m²
Lead Time	<ul style="list-style-type: none">• 2-weeks (approx.) from Wednesday, subject to stock availability.• Additional 1-week for Western Australia.• Express delivery is available subject to a surcharge. Contact Baresque for details and pricing.
Suggested Installation	Non-reverse hang, Random Match.

INT31 PERCEPTION

Wallcoverings » Decorative Wallcoverings

Care Instructions

Always use a clean, white, soft cloth.

Remove liquid stains immediately using a dry cloth. Avoid hard scrubbing.

For tougher stains, dampen the cloth with warm water or a weak dilution of liquid detergent and apply being careful not to soak the material. Always work towards the centre of the stain so as to avoid further spreading.

Remove any detergent with a clean, damp cloth. Gently pat dry.

Always test in an inconspicuous area first.

Warranty

2-year warranty. Visit baresque.com.au/warranty for complete details.

Additional Comments

All products of this collection are natural products. Differences of colour and aspect between batches and even between strips are unavoidable. We cannot guarantee a perfect colour match between the sample in the pattern book and the delivered goods.

INT31 PERCEPTION

Wallcoverings » Decorative Wallcoverings

Colour & Finish Options

COLOURWAY
CARD

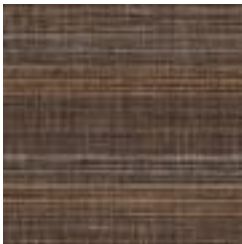
INTUITION
COLOURWAY CARD



INT311



INT312



INT313