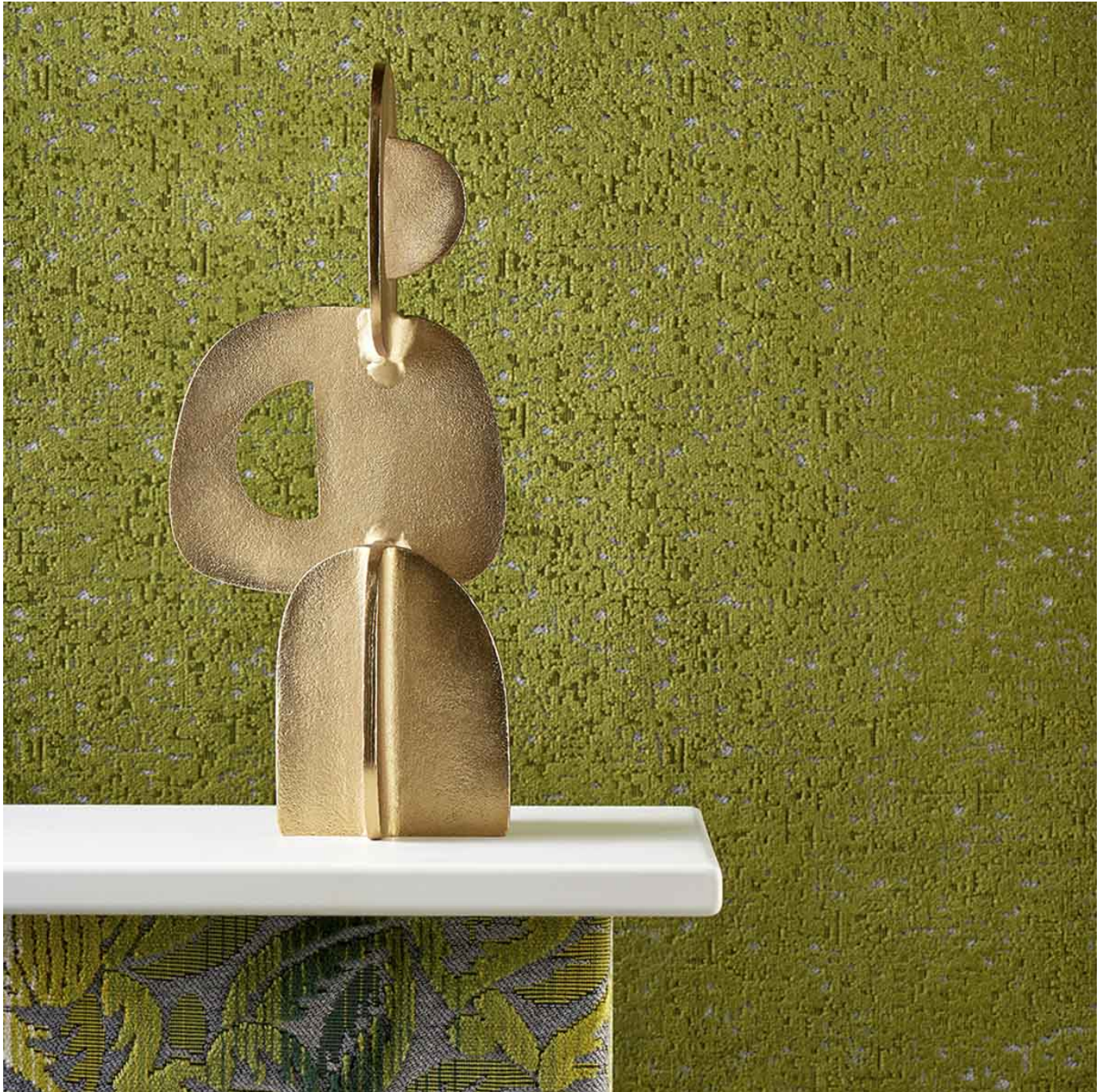


OPERA PARISIENNE

Fabrics » Woven Fabrics



Brand: **Panaz**

Collection: **Parisienne**

1300 306 399

info@baresque.com.au

baresque.com.au

1 of 5

OPERA PARISIENNE

Fabrics » Woven Fabrics

COLOURWAY CARD

OPERA COLOURWAY
CARD



105 INDIGO



211 SPRUCE



231 OLIVE



436 PAPRIKA



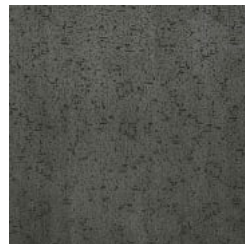
619 ROSEWOOD



805 CREAM



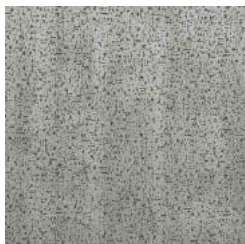
823 CHABLIS



904 PEWTER



905 DOVE



919 ZINC



OPERA PARISIENNE

Fabrics » Woven Fabrics

Opera is part of the Parisienne Collection featuring a beautiful textures velvet that's available in 10 colourways.

Description	The Parisienne jacquard velvet collection features designs inspired by floral, geometric and textural decorative patterns seen in the Art Deco era, the velvets varying surface texture reminds us of cast metal panels, moulded ceramics and angular architectural details in colours that are rich and sophisticated, synonymous with interiors of that time.
Roll Size	138cm x N/A - Available by the lineal metre. MINIMUM ORDER 5 METRES
Composition	Viscose, Cotton and Polyester
Abrasion	50,000 rubs (Wyzenbeek)
Pattern Repeat Size	Not Applicable
Fire Rating	This product can be treated with a fire retardant that will ensure it meets Australian Standard 1530.3. Contact Baresque for details.
Warranty	2-year warranty. Visit baresque.com.au/warranty for complete details.
Lead Time	<ul style="list-style-type: none">• 2-weeks (approx.) from Wednesday, subject to stock availability.• Additional 1-week for Western Australia.• Express delivery is available subject to a surcharge. Contact Baresque for details and pricing.

OPERA PARISIENNE

Fabrics » Woven Fabrics

Care Instructions

- * Vacuum and wipe clean routinely with a microfibre cloth lightly dampened with cold water only.
 - * Soak up spillages as soon as possible with an absorbent dry cloth to prevent staining.
 - * If soiling has accumulated use a mild proprietary cleaner (non-alkaline). Take care to remove all soap residues and dry with a clean absorbent cloth. Then brush pile back to its natural direction.
 - * Do not steam clean - heat seals its stains
 - * Do not use bleach
 - * Do not tumble dry
 - * Do not dry clean
 - * Do not fully immerse in water
 - * Do not apply solvents, alcohol, or any other chemical cleaners
-

OPERA PARISIENNE

Fabrics » Woven Fabrics

Colour & Finish Options