

# MILES

Fabrics » Woven Fabrics



Brand: **Sunbrella**

Applications: **Upholstery**

1300 306 399

[info@baresque.com.au](mailto:info@baresque.com.au)

[baresque.com.au](http://baresque.com.au)

1 of 5

# MILES

Fabrics » Woven Fabrics

---



# MILES

Fabrics » Woven Fabrics

---

Earth-toned fabric that defines outdoor durability

✓ **Outdoor Suitable**

✓ **Bleach Cleanable**

---

**Description** Miles is a durable Sunbrella fabric made from tough acrylic fibers and designed for high-traffic areas like outdoor seating, commercial upholstery and marine. Miles resists fraying, pilling and fading, ensuring lasting quality. Available in 12 earth tones, Miles combines resilience with style for any environment.

---

**Composition** 100% Sunbrella Acrylic

---

**Roll Size** 137cm wide X 55m - Available by the lineal metre

---

**Weight** 481 g/m<sup>2</sup>

---

**Abrasion** 95,000 Double Rubs (ASTM D4157)

---

**Fire Rating** Tested in accordance with AS1530.3

Spread of Flame Index - 0

Smoke Developed Index - 4

---

**Lead Time**

- 2-weeks (approx.) from Wednesday, subject to stock availability.
- Additional 1-week for Western Australia.
- Express delivery is available subject to a surcharge. Contact Baresque for details and pricing.

---

# MILES

Fabrics » Woven Fabrics

---

## Care Instructions

One of the best ways to keep fabrics looking good is to brush off dirt before it becomes embedded in the fabrics and wipe up spills or clean soon after a stain occurs. The quicker you clean spills and stains, the easier they can be to remove.

Avoid scrubbing or any other abrasive cleaning method. Never use stiff bristles or wire brushes, as they may damage the fabric.

Wipe material with a clean, soft cloth dampened with a mild solution of liquid detergent and warm water.

Repeat using only clean water, then dry with a lint free cloth or air dry.

Avoid using wax polishes, solvents or concentrated abrasives.

For more difficult stains, dampen a soft white cloth with a solution of household bleach (10% bleach / 90% water). Rub gently. Rinse with a water dampened cloth to remove bleach concentration.

Always test in an inconspicuous area first.

If care instructions don't deliver the expected results, cease cleaning method immediately and contact Baresque for assistance.

---

## Warranty

2-year warranty. Visit [baresque.com.au/warranty](https://baresque.com.au/warranty) for complete details.

---

# MILES

Fabrics » Woven Fabrics

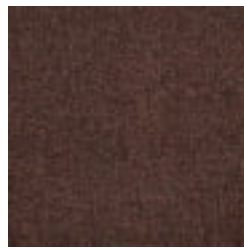
## Colour & Finish Options



COLOURWAY CARD



44462-0001 MIRAGE



44462-0002 SABLE



44462-0003  
TERRAZZO



44462-0004  
MACRAME



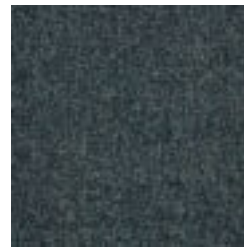
44462-0005  
STARDUST



44462-0006  
WATERCOLOR



44462-0007 GALAXY



44462-0008  
ABALONE



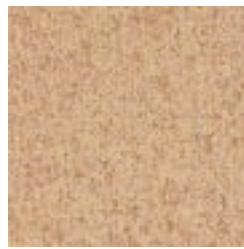
44462-0009  
EMERALD CITY



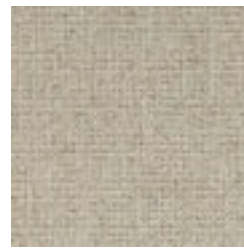
44462-0010  
ENCHANTED



44462-0011  
WATERLILY



44462-0012  
TIGERLILY



44462-0013  
APOTHECARY