

ANTIGUA

Fabrics » Woven Fabrics

Brand: **Crypton**

Applications: **Upholstery**

Inspired by Antigua, this Crypton fabric boasts tropical patterns, natural hues, durability, and stain resistance, blending elegance with ease.

✓ **Bleach Cleanable**

✓ **Seaqual Yarn**

✓ **PFAS Free**

✓ **Crypton**

Description Inspired by the vibrant beauty of Antigua, this Crypton fabric captures the island's essence with bold tropical patterns and refreshing natural hues. Durable and stain-resistant, it pairs elegance with practicality, perfect for lively and relaxed interiors.

Composition 50% Olefin, 47% Seaqual Yarn on Acrylic Backing.

Environmental Info Greenguard Certifications contributes towards LEED credits for low-emitting furniture and ensures compliance with Business and Institutional Furniture Manufacturers Association (BIFMA) X7.1 standard and BIFMA e3 credit 7.6.1.

Greenguard Gold Certification standard includes:

* Health-based criteria for additional chemicals and requires lower total VOC emissions levels to help ensure that products are acceptable for use in environments like schools and healthcare facilities.

* Products that also comply with requirements of the state of California's Department of Public Health (CDPH) "Standard Method for the Test and Evaluation of Volatile Organic Chemical Emissions from Indoor Sources Using Environmental Chambers, Version 1.2 (2017)" (also known as California Section 01350).

* Products that are compliant with the BIFMA X7.1 standard and BIFMA e3 credits 7.6.1, 7.6.2, and 7.6.3.

Pattern Repeat Size 28cm V \ 23cm H

Roll Size 137cm x 50m - Available by the lineal metre.

Weight 584 g/m²

Abrasion Exceeds 105,000 double rubs - heavy duty (ASTM D-4157)

ANTIGUA

Fabrics » Woven Fabrics

Fire Rating Tested in accordance with AS1530.3

Spread of Flame Index - 0

Smoke Developed Index - 5

Lead Time

- 2-weeks (approx.) from Wednesday, subject to stock availability.
 - Additional 1-week for Western Australia.
 - Express delivery is available subject to a surcharge. Contact Baresque for details and pricing.
-

Care Instructions

Always use a clean, white, soft cloth.

Prepare a mixture of 1/3 Napisan and 2/3 Fab. Combine the mixture with water to make a paste about the consistency of soft margarine i.e. not too runny. Apply using a soft bristle brush. Leave for 10 minutes.

Use a brush and clean, warm water to remove the paste being sure to renew the water so that it remains clean.

Never use stiff bristles or wire brushes, as they may damage the fabric. To prevent soil build-up, frequent vacuuming is recommended.

Using a cloth to pat dry will help eliminate watermarks.

For more difficult stains, dampen a soft white cloth with a solution of household bleach (10% bleach / 90% water). Rub gently. Rinse with a water dampened cloth to remove bleach concentration.

Always test in an inconspicuous area first. If care instructions don't deliver the expected results, cease cleaning method immediately and contact Baresque for assistance.

Warranty

2-year warranty. Visit [baresque.com.au/warranty](https://www.baresque.com.au/warranty) for complete details.

ANTIGUA

Fabrics » Woven Fabrics

Colour & Finish Options



66815 EGRET



66816 DRIFTWOOD



66817 OCEAN



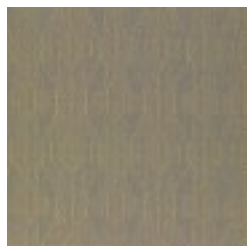
66818 DEEP



66819 PAPAYA



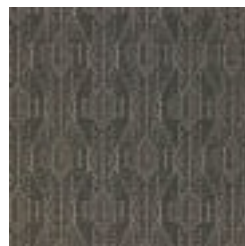
66820 PASSION



66821 SOL



66822 TROPIC



66823 BLACK SAND