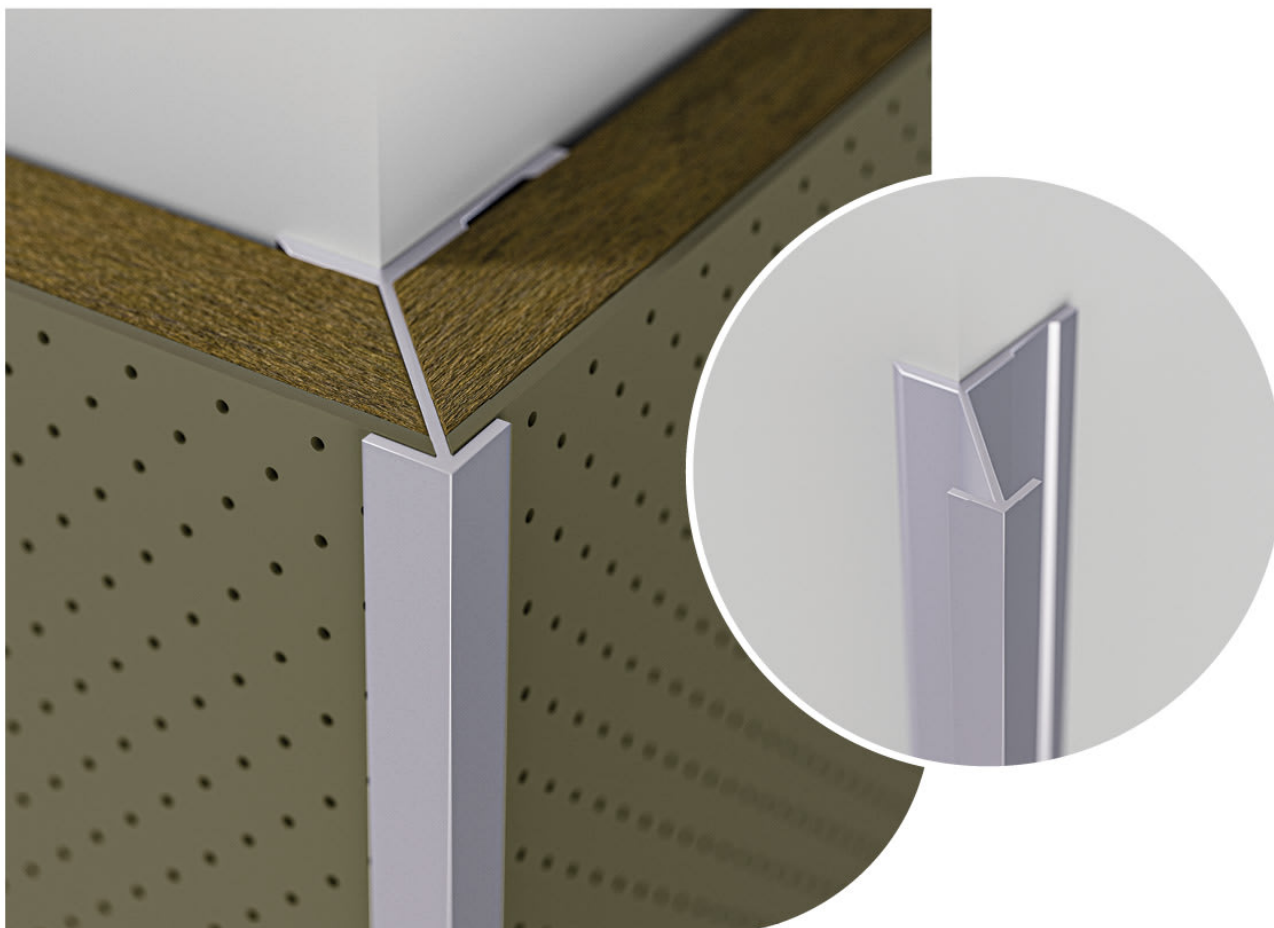


# CORNER TRIM

Acoustics » Hardware

---

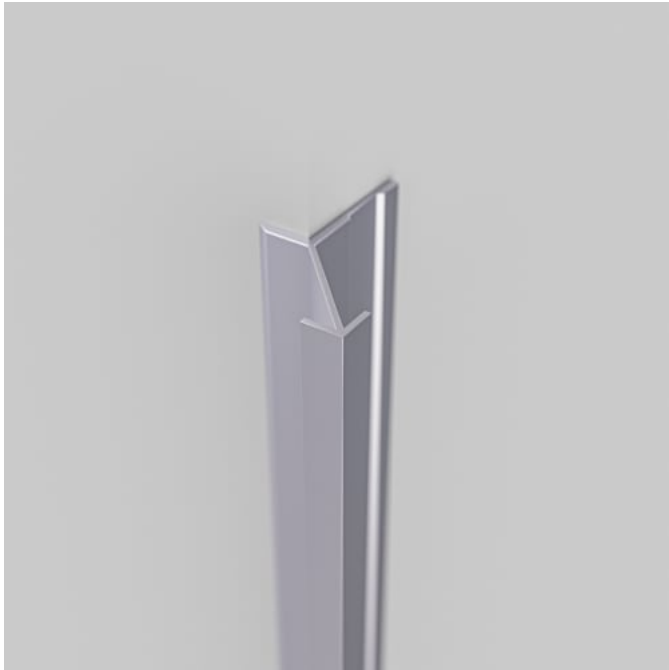


Brand: **Baresque**

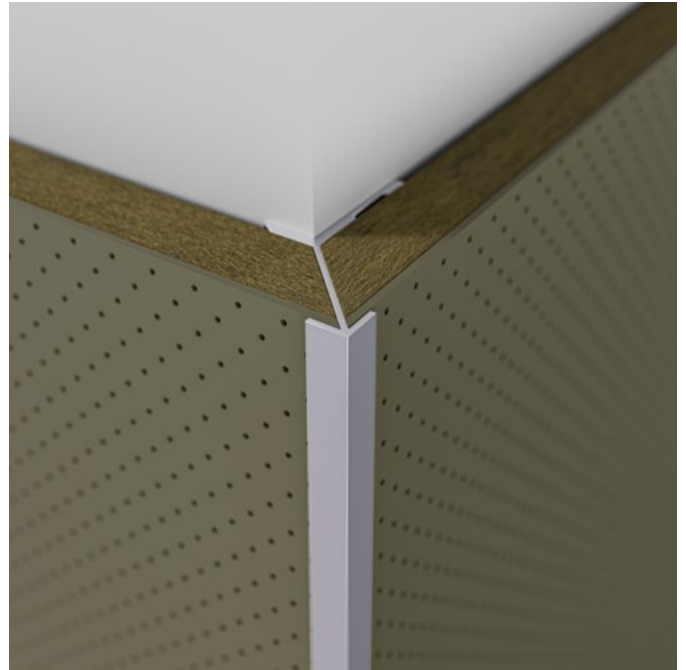
Applications: **Walls**

# CORNER TRIM

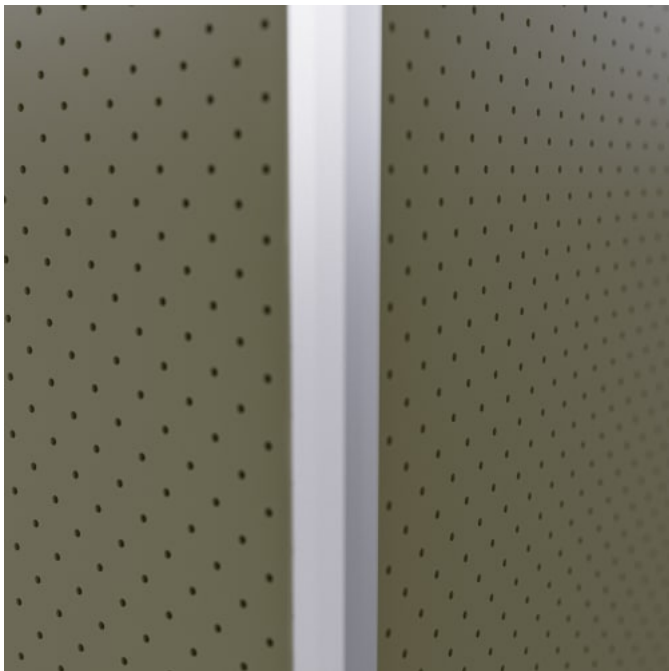
Acoustics » Hardware



Corner Trim Detail



Corner Trim Installation Detail



Corner Trim Installation Detail 2

# CORNER TRIM

Acoustics » Hardware

Corner Trim provides a strong, neatly mitred solution that's more polished than basic joins, ensuring lasting stability and a professional, refined edge.

## ✓ Easy Install

**Description** Finish your 12mm panel installations with precision and style using our Corner Trim. Designed to create sharp, clean corners, this aluminium trim not only protects but enhances the overall look of your space.

Made from premium aluminium, Corner Trim offers exceptional corrosion resistance and a perfectly straight profile, ensuring a polished finish that lasts. Whether you're aiming for a professional, seamless corner or simply adding a bit of extra protection, this trim delivers both strength and aesthetics.

Installation is easy - just apply silicone and fit it into place for a secure hold. Choose from the sleek matte silver anodized finish for a modern touch, or go custom with one of 12 Zintra powder-coated colours to match your design. This trim brings lasting durability and visual appeal to any project.

### Standard Finish:

Matte Silver Anodized Aluminium for a sleek, modern finish and durable performance.

### Custom:

Mill Finish Aluminium (raw aluminium ready for powder coating) available in a choice of 12 Zintra Colours for a tailored look that suits your style.

Suitable for up to 13mm panels.

**Composition** Anodized Aluminium

**Dimensions** 35.1mm (1.4") w x 23.1mm (0.9") h x 2900mm (114") l  
Width of visible section 5mm (0.2")

**Supplied As** Ships Flat Pack  
See Installation Guide in downloads for more details

**Assembly & Delivery** Ships Flat Pack  
Go to the Technical Documents and download the Installation Guide for more details.

**Warranty** 5-year warranty.

# CORNER TRIM

Acoustics » Hardware

---

How to Specify

Power-coat colour (if required)

---

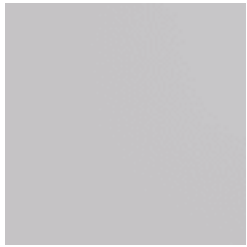
# CORNER TRIM

Acoustics » Hardware

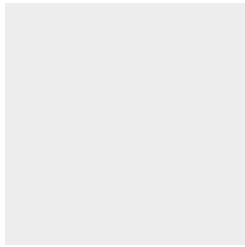
---

## Colour & Finish Options

### Powdercoat



Anodised Silver



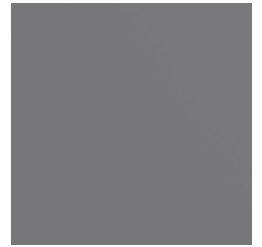
Bengal White



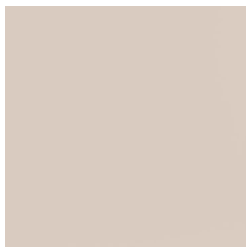
Denim



Fern



Gunmetal



Light Grey



Marigold



Matte Black



Spice



Tango



Teal



Terracotta