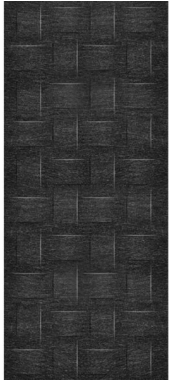


TISSAGE

Zintra Textures



Texture:
 Lustre:
 Transparency:

<p>DESCRIPTION / FEATURES</p>	<p>Zintra Acoustic Textures not only highlight the fantastic acoustic qualities of Baresque's Zintra Acoustic Panel, but also the incredible fabrication capabilities Baresque has to offer. Zintra Acoustic Textures subtle 3-dimensional relief creates dimension and acoustic attenuation within your space making them ideal for noisy, public spaces. Zintra's wide range of designs and colours slip easily into classic or modern settings. Zintra Acoustic Textures Panel features include:</p> <ul style="list-style-type: none"> * Cost effective sound solution - NRC = 0.45 * 2745mm long sheets ideal for join-free floor to ceiling applications * Broad range of neutral and bright colours * Suitable for a multitude of applications - walls, ceilings, screens * Easily fabricated and installed * Pinnable <p>Find out more about the Benefits of Zintra and its NRC rating on the DOWNLOAD tab.</p>
--------------------------------------	---

HOW TO SPECIFY	<p>1. Design</p> <p>2. Colour</p> <p>Only available in Sheet Size/Thickness 2790mm x 1195mm x 12mm (becomes approx. 24mm thick overall when textures are pushed out)</p>
COMPOSITION	Zintra Acoustic Panel - 100% Polyester
FINISHES AVAILABLE	Zintra Panel - Matt. Check out the Zintra 12mm colour range here or the DOWNLOAD tab for a pdf.
SHEET SIZE	<p>2745mm x 1220mm x 24mm</p> <p>Custom sizes also available</p>
WEIGHT	2.3 kg/m ²
INDOOR/OUTDOOR	Indoor only
WET AREAS	No
PATTERN REPEAT	N/A
SUGGESTED INSTALLATION	Zintra Acoustic Textures should be installed using 3M VHB double sided tape (not supplied) as per the Handling Fabrication and Installation guide on the DOWNLOADS tab.
LEAD TIME	2-3 weeks + 1 week for Western Australia
CUSTOMISABLE	<p>Design - Yes</p> <p>Colour - Yes</p> <p>Contact Baresque for details</p>
THERMOFORMABLE	No
FIRE	Zintra
FABRICATION	Stanley knife if required
REFINISHABLE	No
CARE INSTRUCTIONS	Zintra
ENVIRONMENTAL INFORMATION	Zintra

FIRE RATING	<p>Zintra Acoustic Panel was tested in accordance with AS ISO 9705 “ 2003 for the purpose of determining the Group Number classification as required by the Building Code of Australia for the control of fire spread on interior wall and ceiling linings.</p> <p>The result achieved was: Classification - Group 1 Specific Extinction - Less than 250m³/kg</p>
ADDITIONAL COMMENTS	<p>Only available manufactured from Zintra Acoustic Panel - 12mm. (24mm with texture)</p>
SUPPLIED AS	<p>Sheet ready to install</p>

CARE INSTRUCTIONS

Remove spills immediately using damp, clean cloth.

Dab Zintra with a clean, soft white cloth dampened with a mild solution of liquid detergent and warm water. Repeat using only clean water, then pat dry with a lint free cloth.

Avoid using wax polishes, solvents or concentrated abrasives.

For more difficult stains, dampen a soft white cloth with a solution of household bleach (10% bleach / 90% water). Dab gently.



Repeat using only a clean, water dampened cloth to remove bleach concentration then pat dry with a lint free cloth.

Always test in an inconspicuous area first. If care instructions don't deliver the expected results, cease cleaning method immediately and contact Baresque for assistance.





baresque.com.au
e info@baresque.com.au
p 1300 306 399

ENVIRONMENTAL INFORMATION	Easily recycled through standard recycling channels
----------------------------------	---