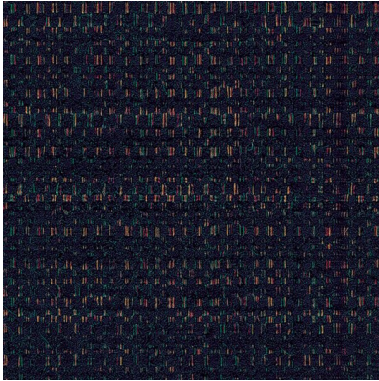


TAIPEI
 Crypton



Texture: 2
 Lustre: 1
 Transparency: 1

COMPOSITION	CRYPTON - 65% Rayon / 34% Polyester / 1% Nylon
WIDTH	137cm
ROLL LENGTH	50m - Available by the lineal metre
WEIGHT	249g/m2
PATTERN REPEAT	N/A
LEAD TIME	2 weeks (approx) from Wednesday subject to stock availability. + 1 week for Western Australia. Express delivery is available subject to a surcharge. Contact Baresque for details and pricing.
FIRE	Fire: Due to its specific composition TAIPEI has not been fire tested in Australia but can be treated with a fire retardant that will ensure it meets Australian Standard 1530.3

CARE INSTRUCTIONS

Always use a clean, white, soft cloth.

Prepare a mixture of 1/3 Napisan and 2/3 Fab. Combine the mixture with water to make a paste about the consistency of soft margarine i.e. not too runny. Apply using a soft bristle brush. Leave for 10 minutes.

Use a brush and clean, warm water to remove the paste being sure to renew the water so that it remains clean.

Using a cloth to pat dry will help eliminate watermarks.

Always test in an inconspicuous area first. If care instructions don't deliver the expected results, cease cleaning method immediately and contact Baresque for assistance.



baresque.com.au
e info@baresque.com.au
p 1300 306 399

ABRASION	60,000 + double rubs Wyzenbeek
-----------------	--------------------------------