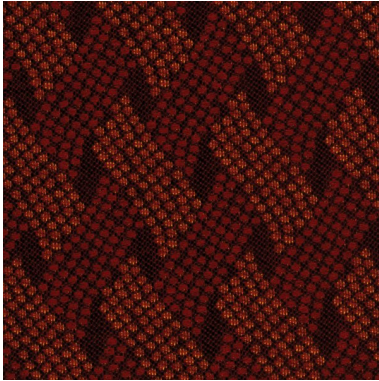


Entwine 1007
 Fabrics - Crypton



Texture: 2
 Lustre: 1
 Transparency: 1

DESCRIPTION / FEATURES	Entwine introduces a subtle metallic sheen into a standard basketweave texture, evoking elements of luxury and allure in every hue.
COMPOSITION	CRYPTON - 100% polyester
WIDTH	137cm
ROLL LENGTH	45.7m - Available by the lineal metre
WEIGHT	340 g/m ²
PATTERN REPEAT	4.4cm V / 3.2cm H
LEAD TIME	2 weeks (approx) from Wednesday subject to stock availability. + 1 week for Western Australia. Express delivery is available subject to a surcharge. Contact Baresque for details and pricing.
FIRE RATING	In accordance with AS1530.3 Spread of Flame Index - 0 Smoke Developed Index - 5
ADDITIONAL COMMENTS	Bleach cleanable
CARE INSTRUCTIONS	FB - Crypton
ABRASION	50,000 double rubs (Wyzenbeek)
FIRE	Crypton (BUR)

CARE INSTRUCTIONS

Always use a clean, white, soft cloth.

Prepare a mixture of 1/3 Napisan and 2/3 Fab. Combine the mixture with water to make a paste about the consistency of soft margarine i.e. not too runny. Apply using a soft bristle brush. Leave for 10 minutes.

Use a brush and clean, warm water to remove the paste being sure to renew the water so that it remains clean.

Using a cloth to pat dry will help eliminate watermarks.

Always test in an inconspicuous area first. If care instructions don't deliver the expected results, cease cleaning method immediately and contact Baresque for assistance.