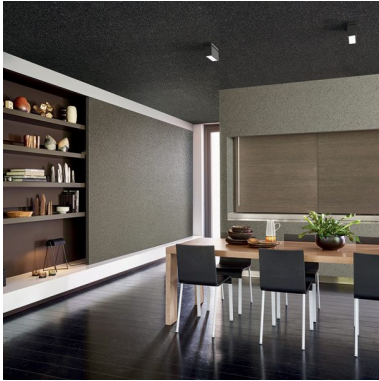


## LARGE MICA - GRAPHITE

Natural



Texture: 3  
 Lustre: 2  
 Transparency: 1

<b>DESCRIPTION / FEATURES</b>	The wallcovering collection Graphite comprises endless variations on mica, a mineral formed out of a chemical reaction between quartz and granite. Exposed to extreme heat, the mineral expands into pieces 2000% or even 3000% of their original size, in a spectrum of brilliant colours. The natural sparkle of the mineral pieces enhance the dark tones while conferring a mother-of-pearl glow to the lighter colours. Creating designs that concentrate on the inherent uniqueness of the mineral, Graphite is a collection that defies explanation.
<b>COMPOSITION</b>	Mica sparkles on paper backing
<b>WIDTH</b>	91cm
<b>ROLL LENGTH</b>	N/A - Available by the lineal metre
<b>PATTERN REPEAT</b>	N/A
<b>SUGGESTED INSTALLATION</b>	Reverse hang, butt join.
<b>LEAD TIME</b>	2 weeks (approx) from Wednesday subject to stock availability. + 1 week for Western Australia. Express delivery is available subject to a surcharge. Contact Baresque for details and pricing.

<b>FIRE RATING</b>	<p>Fire:</p> <p>In accordance with AS/NZS 3837</p> <p>Classification - Group 2</p> <p>Specific Extinction - Less than 250m<sup>2</sup>/kg</p>
<b>ADDITIONAL COMMENTS</b>	<p>Search Graphite to find other designs in this collection.</p>
<b>CARE INSTRUCTIONS</b>	<p>Mica wallcoverings should be handled with care, as they are not stain repellent treated.</p> <p>Remove liquid stains immediately using a clean, white, soft, damp cloth tapping on the wallcovering lightly.</p> <p>Use of a vacuum cleaner is not recommended.</p> <p>Always test in an inconspicuous area first. If care instructions don't deliver the expected results, cease cleaning method immediately and contact Baresque for assistance.</p>
<b>ENVIRONMENTAL INFORMATION</b>	<p>The materials contained in these wallcoverings are naturally occurring and renewable resources harvested from farms and coloured with water-based inks.</p>